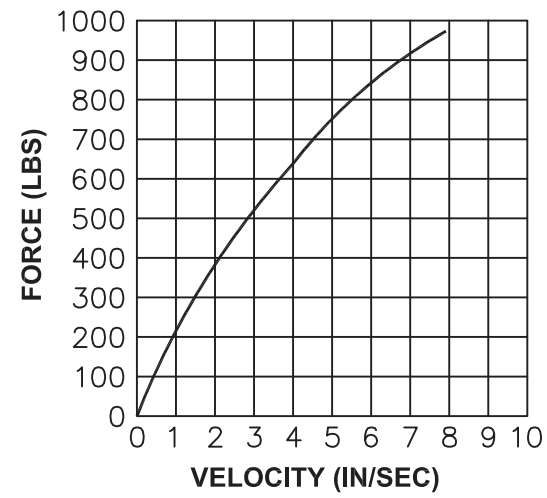


REPRESENTATIVE DAMPING CURVE...±15%

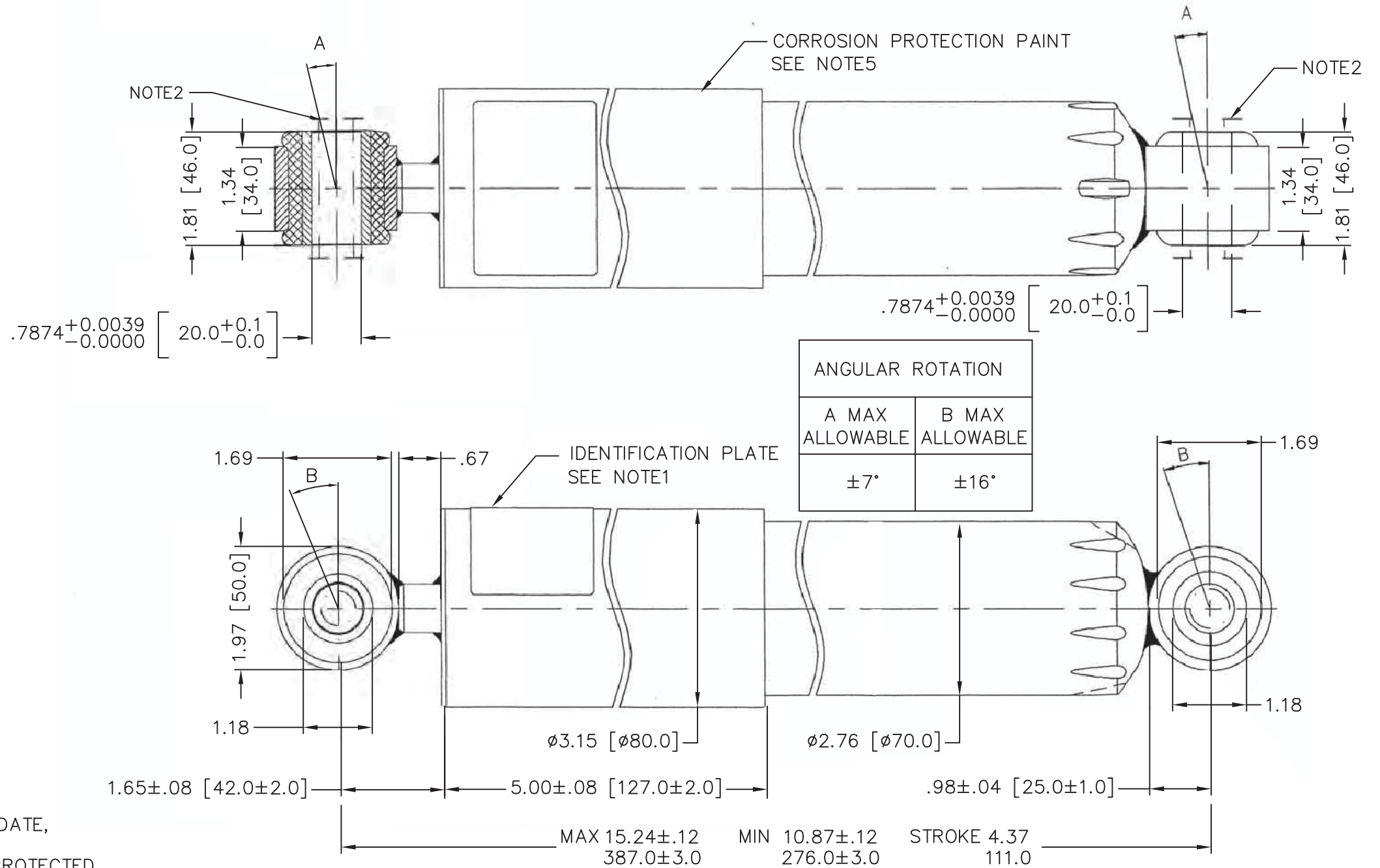


PIN, SHOCK ABSORBER (02)

DAMPING FORCE IN lbf	
v = 3.94 ips	
EXTENSION	COMPRESSION
629.47 lbf±15%	629.47 lbf±15%

GENERAL NOTES:

1. THE STAMP SHALL INCLUDE: TYPE, SERIAL#, MFG DATE, MADE IN, DAMPENING RESISTANCE.
2. — I — I FLATS WITHOUT PAINT AND CORROSION PROTECTED
3. DIMENSION UNITS ARE INCHES [MILLIMETERS].
4. REMOVE ALL BURRS AND SHARP EDGES.
5. PAINT : RAL 7011 IRON GREY.
6. PERFORMANCE AMBIENT TEMPERATURE -31°F TO 122°F.
7. VENDOR SHALL PROVIDE THE CERTIFICATE OF CONFORMANCE.
8. DAMPER RELIABILITY : MINIMUM 5 YEARS.



VERTICAL DAMPER (01)

CONTROLLED

Item No.	QTY	P/N	Description	Material/Spec	Weight/Dimensions	Rev.	Description & Date	GENERAL TOLERANCES (IN [MM])	Drawn by:	Int. Date:	IF THIS DOCUMENT IS NOT MARKED "CONTROLLED" IN RED, THEN IT SHOULD BE USED AS REFERENCE ONLY.	M metro	WASHINGTON METROPOLITAN AREA TRANSIT AUTHORITY	
02	2	B18355045/DRAWING A-0000-579 rev A	PIN, SHOCK ABSORBER	STEEL SAE J429, G5	3.31 LBS			FRACTIONS ±1/64 DECIMALS .X .XX±.02 [.5] .XXX±.005 [.127] ANGLES ±.2°	A.CREECH	18JAN13				
01	1		VERTICAL DAMPER				INITIAL RELEASE. 18JAN13 ALC	Undim. Wall Thk.: Undim. Radii:	Manuel A. Lopez					
								Undim. Edges:			Scale: 1:2	Sheet Size: B	Next Assembly: E-0000-010-01	Part. No.: B18-35-5008 Dwg. No.: WDB18355008